

Wing AR

SURFACE



SPECIFICATION SHEET

Wing AR



Model 1821

Type

S Surface

Size

26 26.0" [660mm]
37 37.0" [940mm]
49 49.0" [1245mm]
Custom

Wattage ^{1,2}

26"
L 6W (800lm)
M 12W (1485lm)
37"
L 9W (1200lm)
M 18W (2230lm)
49"
L 12W (1600lm)
M 24W (2970lm)

Color Temp ³

30 3000
35 3500
40 4000

Voltage

U 120/277 Volt
1 120 Volt (DFPN only – see section Control)

Driver

RD Remote

Control - RD

S Non-dim
D010 0-10V 10%
DFPN Lutron Forward Phase 1% 120 Volt
L3DAE Lutron Hi-lume 1% EcoSystem
L3DOE Hi-lume Premier 0.1% EcoSystem

Diffuser ⁴

SW Satin opal acrylic

Finish

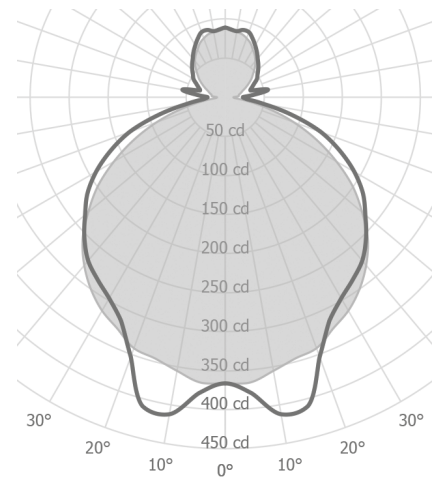
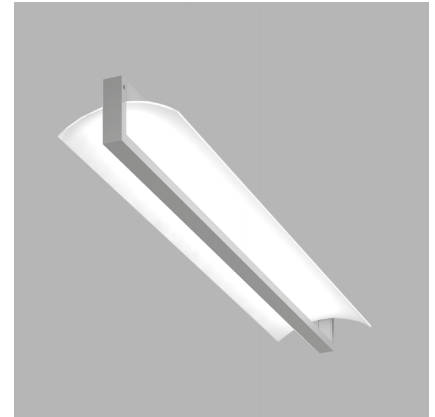
19 Painted anodized aluminum - RAL 9006 matte
21 Painted white - RAL 9010 matte
26 Painted black - RAL 9005 matte
22 Painted custom color

Notes

- 1 Nominal lumens value specified
- 2 Linear LED board, constant voltage 24 Volt
- 3 90+ CRI standard
- 4 Reflector is opal acrylic

Example fixture number:

1821 - S - 49 - L - 30 - U - RD - S - SW - 19



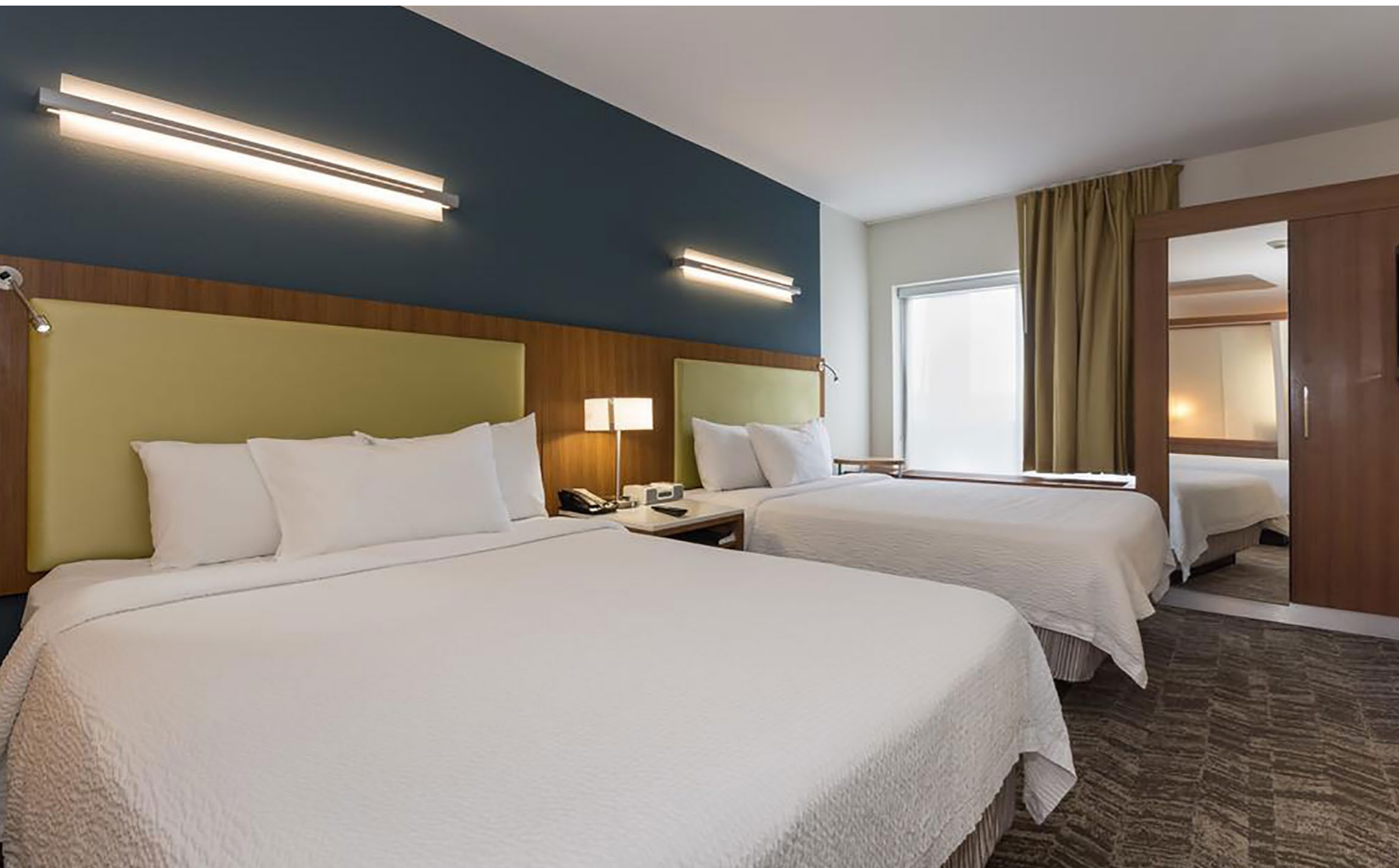
Wing AR

SURFACE

Wing AR reflects simple soft forms and makes an ideal solution for interior architectural spaces. Pendant, wall, or ceiling vertically or horizontally mounted with indirect LED lighting. Wing AR provides glare-free indirect illumination. It is perfect for stairways and corridors with open ceilings.



Size	
26	26" [660mm]
37	37" [940mm]
49	49" [1245mm]
	Custom



* Continuous multiple fixture configurations available
* See page 131 for technical details and specification

Wing AR

SURFACE



SPECIFICATION SHEET

Wing AR

